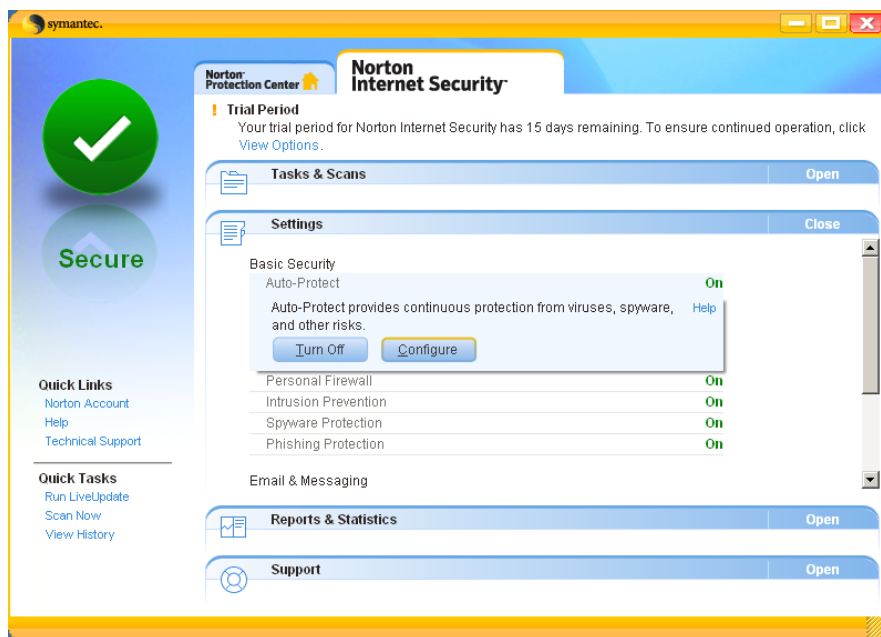


# How To Set Exclusions Within Norton Internet Security

If an Internet Security Suite package is installed, then it is likely to contain both an Anti-Virus product and a Firewall product. Each product will need configuring separately. This document contains the information required to configure exclusions within Norton Internet Security.

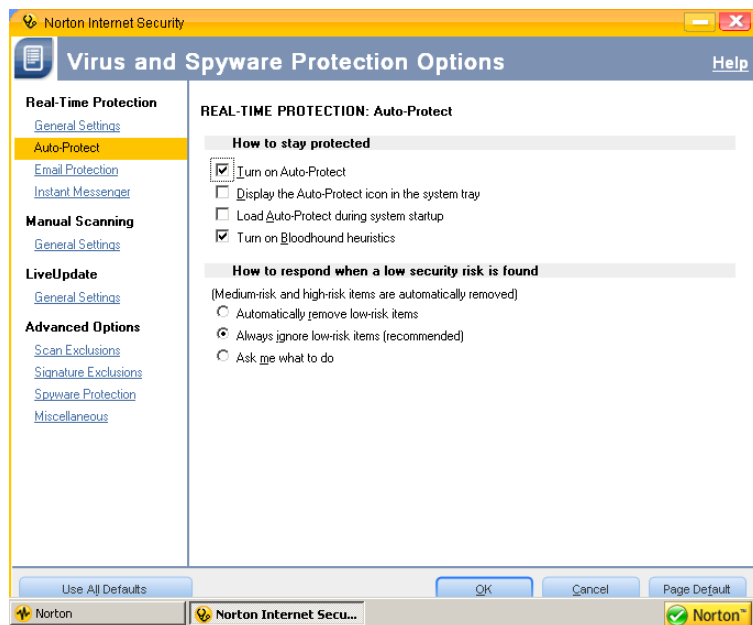
**Please note:** This document is solely intended to advise on a possible workaround for your particular software when resolving performance issues. It is not intended to be used as a definitive document for the installation and control of the Anti-Virus software installed on site nor is it intended to be a comparison document for the process of decision-making.

- Open Norton Internet Security and click Settings.

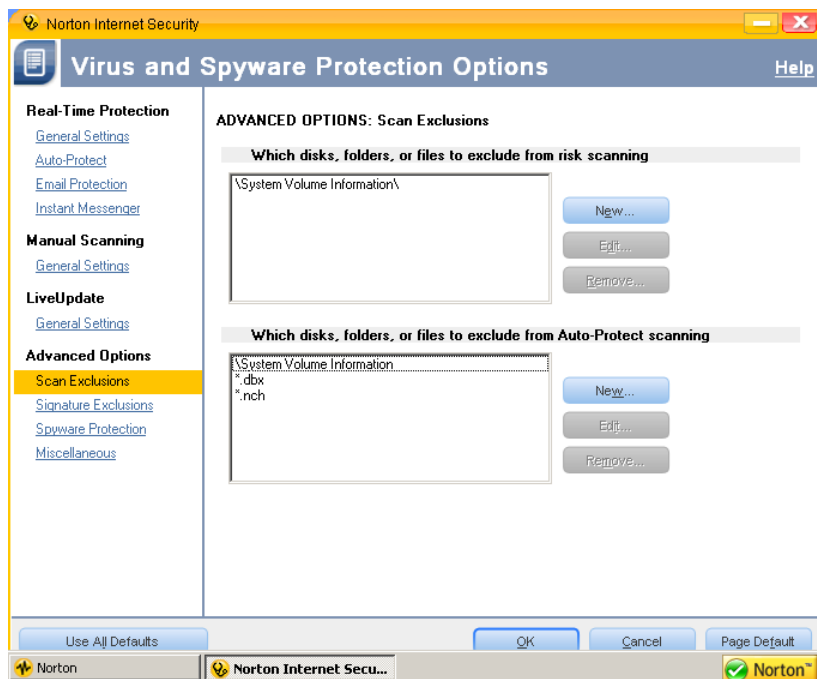


# How To Set Exclusions Within Norton Internet Security

- Under Basic Security click **Auto-Protect** and then click **Configure**.

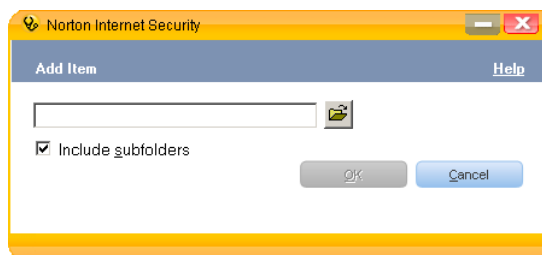


- Click Scan Exclusions.

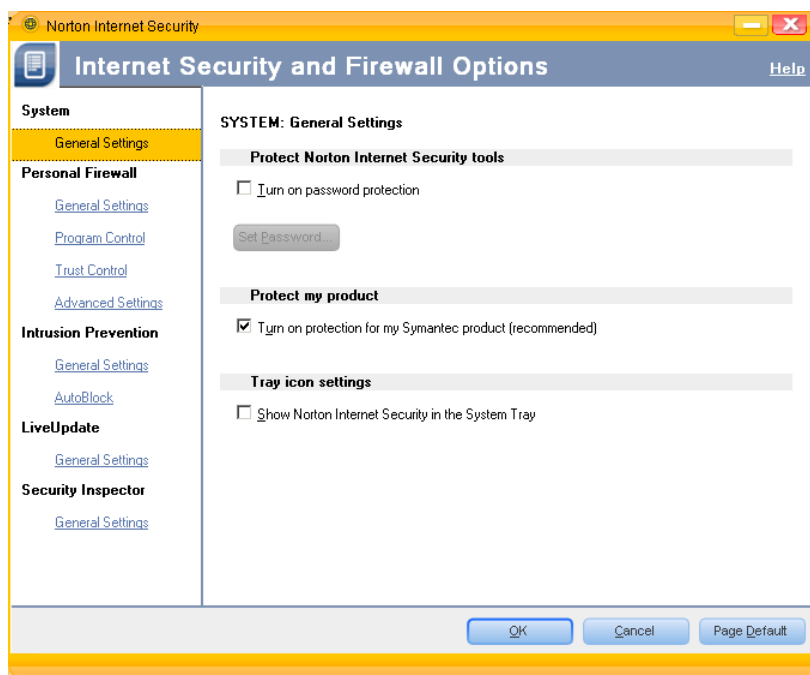


- Under Which Disks, Folders, or Files to exclude from Auto-Protect scanning, click **New**.

# How To Set Exclusions Within Norton Internet Security

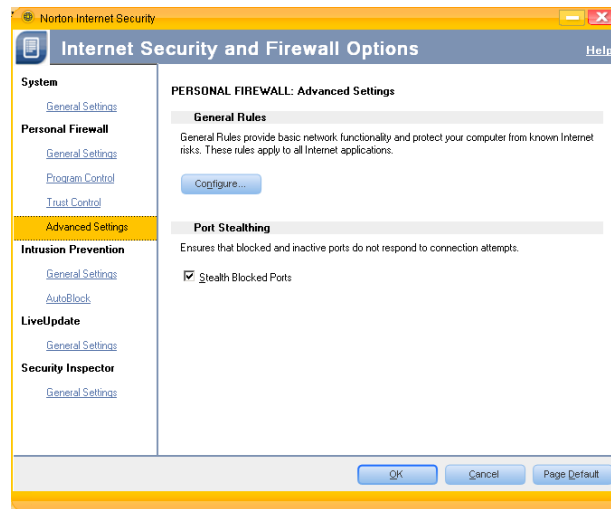


- Click **Browse** and select the network drive that relates to the PTP installation.
- Press **OK**.
- Confirm the selection is correct and then click **OK**.
- You should now see the selected drive listed under: Which disks, folders, or files to exclude from Auto-Protect Scanning, if so click **OK**.
- Click **Personal Firewall** and click **Configure**.

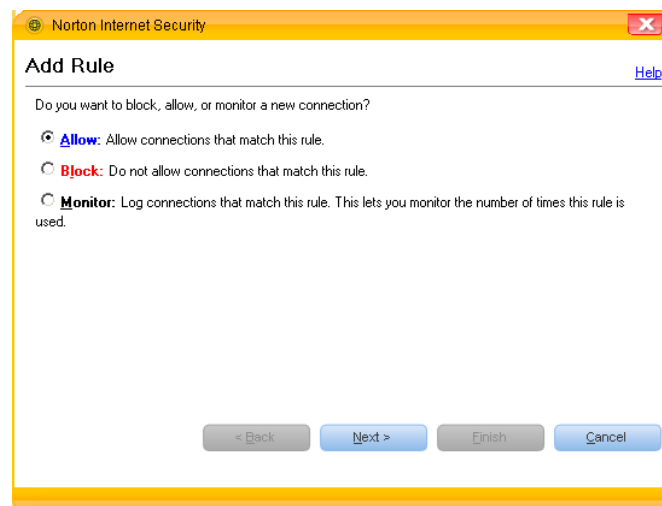


# How To Set Exclusions Within Norton Internet Security

- You need to configure a rule to allow traffic/request to be sent between your computer and the server, click **Advanced Settings** and then click **Configure**.

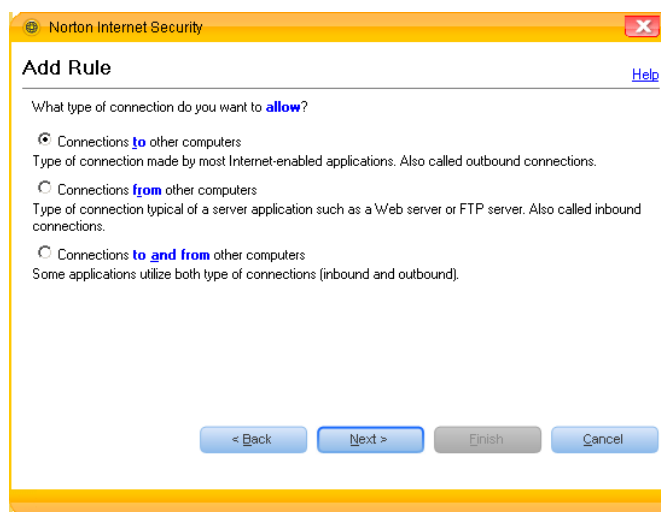


- Click **Add** then click **Next**.

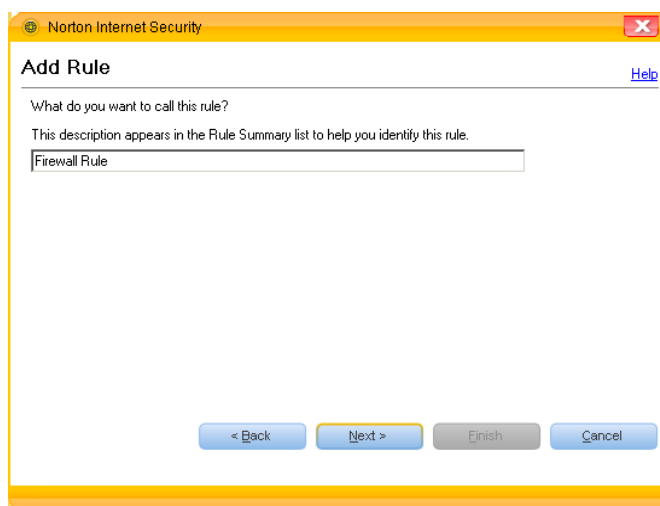


# How To Set Exclusions Within Norton Internet Security

- Click Connections to other computers, click Next and click Next.



- Continue to click **Next** until the **Add Rule** dialog box appears. Give the rule a name.



- Click **Next**, then click **Finish** and click **OK** to confirm.